

State of Wyoming Corner Record

(In compliance with the CORNER PERPETUATION AND FILING ACT, Wyoming Statutes, 2013 Section 33-29-901 through 33-29-910, and the Regulations of the Board of Professional Engineers and Professional Land Surveyors)

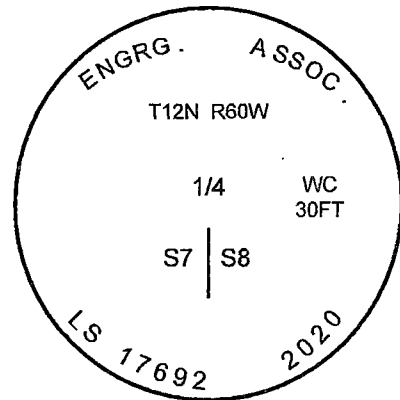
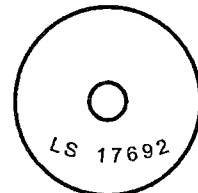
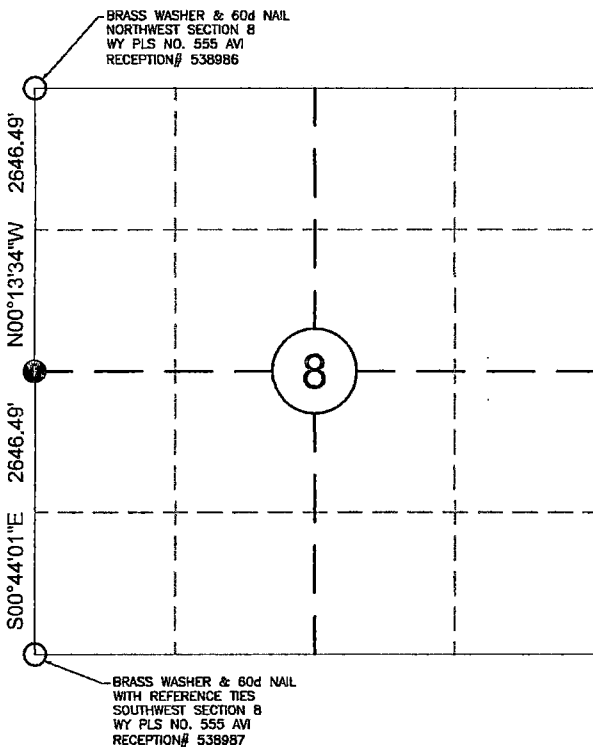
Reverse side of this form may be used if more space is needed.

Record: Corner was originally monumented with a sandstone 14x10x3 set 9 in. deep, marked 1/4 on west side for 1/4 section corner at 40.00 chains in field notes from the original G.L.O. subdivisions survey Vol. 45 July 25th - 30th, 1874.

Found: No evidence of original corner or accessories were found. Field notes from C.R. #64 R.O.W. (changed to C.R. 161) Surveyed October 2, 1894 by John A. Apperson - County Surveyor found in C.R. Book #1 - Page 99 at the Laramie County Clerk's office. This survey established the right of way width for the county road as 80 feet.

Reestablishment: The corner was established at the mid-point of the Northwest and Southwest corners of Section 8. Holding this latitudinal position and an extension of the East-West centerline from the existing East quarter corner of Section 8 to the existing centerline of County Road 161 from evidence found on Reception # 538171, and field notes from C.R. #64 R.O.W. (changed to C.R. 161) Surveyed October 2, 1894 by John A. Apperson - County Surveyor found in C.R. Book #1 - Page 99 at the Laramie County Clerk's office. As a result, the existing County Road # 161 centerline is accepted as the best available evidence as to the longitudinal position of this corner.

Set: A 1.5" brass washer and mag nail 1" below asphalt pavement in the centerline of County Road # 161 inscribed as shown. I also set a 2.5" aluminum cap on a 5/8"x24" rebar as a 30' witness corner to the 1/4 corner common to Section 7/8 on the East side of County Road #161. (W.C.: N.88°52'30"E., 30.00 feet).



RECORDED 1/15/2021 AT 9:10 AM BK# 2715 PG# 3
 Debra K. Lee, CLERK OF LARAMIE COUNTY, WY PAGE 1 OF 2
REC# : 799667

Monument Inscription

See page 2 for sketch for additional details.

Date of Field Work: 12/22/2020

Job Number: 20100.32

County: LARAMIE

Cross Index Plat

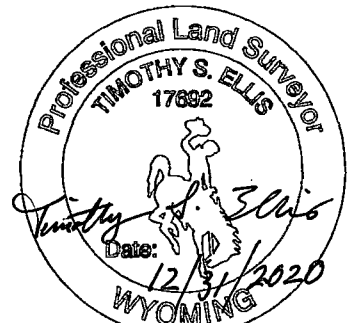
	1	2	3	4	5	6	7	8	9	10	11	12	13	14	15	16	17	18	19	20	21	22	23	24	25
A																									
B	+	+	+	+	+	+	+	+	+	+	+	+	+	+	+	+	+	+	+	+	+	+	+	+	+
C	+	6	+	+	5	+	+	4	+	+	3	+	+	2	+	+	1	+	+	+	+	+	+	+	+
D	+	+	+	+	+	+	+	+	+	+	+	+	+	+	+	+	+	+	+	+	+	+	+	+	+
E	+	+	+	+	+	+	+	+	+	+	+	+	+	+	+	+	+	+	+	+	+	+	+	+	+
F	+	+	+	+	+	+	+	+	+	+	+	+	+	+	+	+	+	+	+	+	+	+	+	+	+
G	+	7	+	+	8	+	+	9	+	+	10	+	+	11	+	+	12	+	+	+	+	+	+	+	+
H	+	+	+	+	+	+	+	+	+	+	+	+	+	+	+	+	+	+	+	+	+	+	+	+	+
J	+	+	+	+	+	+	+	+	+	+	+	+	+	+	+	+	+	+	+	+	+	+	+	+	+
K	+	+	+	+	+	+	+	+	+	+	+	+	+	+	+	+	+	+	+	+	+	+	+	+	+
L	+	18	+	+	17	+	+	16	+	+	15	+	+	14	+	+	13	+	+	+	+	+	+	+	+
M	+	+	+	+	+	+	+	+	+	+	+	+	+	+	+	+	+	+	+	+	+	+	+	+	+
N	+	+	+	+	+	+	+	+	+	+	+	+	+	+	+	+	+	+	+	+	+	+	+	+	+
O	+	+	+	+	+	+	+	+	+	+	+	+	+	+	+	+	+	+	+	+	+	+	+	+	+
P	+	19	+	+	20	+	+	21	+	+	22	+	+	23	+	+	24	+	+	+	+	+	+	+	+
Q	+	+	+	+	+	+	+	+	+	+	+	+	+	+	+	+	+	+	+	+	+	+	+	+	+
R	+	+	+	+	+	+	+	+	+	+	+	+	+	+	+	+	+	+	+	+	+	+	+	+	+
S	+	+	+	+	+	+	+	+	+	+	+	+	+	+	+	+	+	+	+	+	+	+	+	+	+
T	+	30	+	+	29	+	+	28	+	+	27	+	+	26	+	+	25	+	+	+	+	+	+	+	+
U	+	+	+	+	+	+	+	+	+	+	+	+	+	+	+	+	+	+	+	+	+	+	+	+	+
V	+	+	+	+	+	+	+	+	+	+	+	+	+	+	+	+	+	+	+	+	+	+	+	+	+
W	+	+	+	+	+	+	+	+	+	+	+	+	+	+	+	+	+	+	+	+	+	+	+	+	+
X	+	31	+	+	32	+	+	33	+	+	34	+	+	35	+	+	36	+	+	+	+	+	+	+	+
Y	+	+	+	+	+	+	+	+	+	+	+	+	+	+	+	+	+	+	+	+	+	+	+	+	+
Z	+	+	+	+	+	+	+	+	+	+	+	+	+	+	+	+	+	+	+	+	+	+	+	+	+
	1	2	3	4	5	6	7	8	9	10	11	12	13	14	15	16	17	18	19	20	21	22	23	24	25

Firm/Agency, Address
 Engineering Associates
 605 Plaza Court
 Laramie, Wyoming 82070
 Telephone: (307) 742-9220
 Fax: (307) 742-0316
 engassoc@eaengineers.com

This corner record was prepared by me or under my direction and supervision.

SEAL & SIGNATURE

County Clerk's Office Use Only



Corner Name 1/4

Section 7/8, T12N, R60W, 6 P.M.

Cross-Index No.: G-5